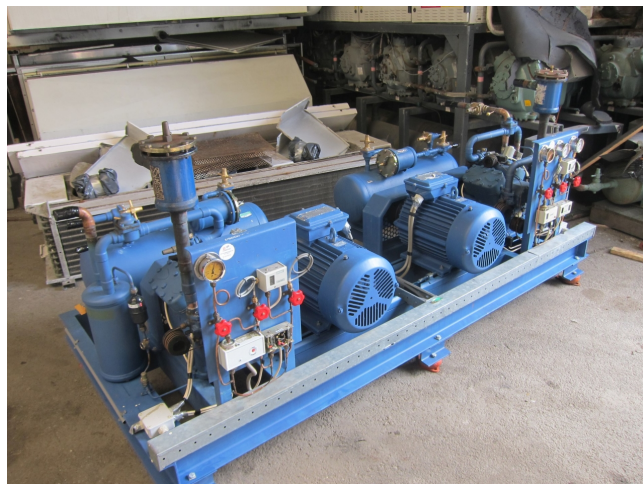


# Bock F5 (X2) Cool/freeze installation

## Specifications

Brand	Bock
Type	F5 (X2) Cool/freeze installation
Refrigerant	Freon
kW at +10°C/+40°C	166.66
kW at 0°C/+40°C	118.80
kW at -5°C/+40°C	98.30
kW at -10°C/+40°C	80.02
kW at -20°C/+40°C	49.88
kW at -30°C/+40°C	27.96
kW at -40°C/+40°C	13.78
kW at -45°C/+40°C	9.44
On steel base frame	✓
Pressure safety switches	✓
Hp/Lp/Op	
Pressure gauges	✓
Hp/Lp/Op	
Liquid receiver	✓
Oil separator	✓
Liquid line filter drier	✓
Sight Glass	✓
Remarks	# // Electromotor: 11 kW at 1445 RPM // Pulley EM: 180 / Pulley Compr: 230
Remarks	R404a - R22 or other freon types



Package / Rack	✓
Sizes	2500x1100x1200 mm (LxWxH)
Stock	1

## Description

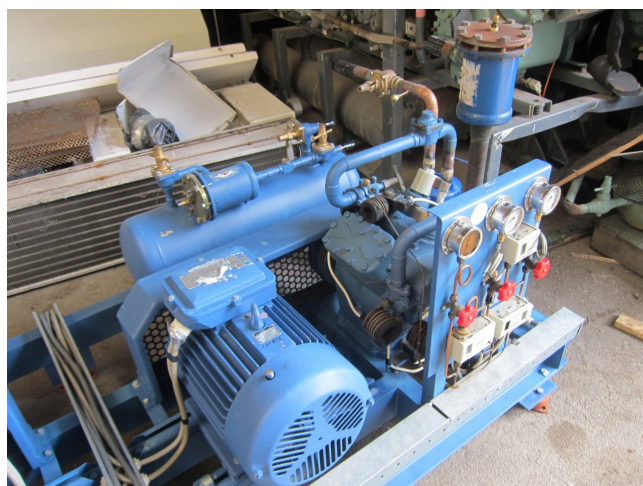
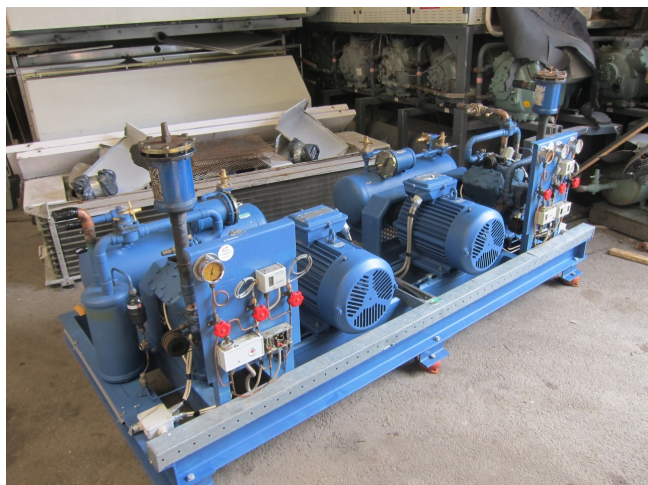
### Used Bock F5 (X2) Cool/freeze installation

Used Bock F5 (X2) cool/freeze installation, complete with pressure safety switches, pressure gauges, liquid receiver, oil separator, liquid line filter and sight glass.

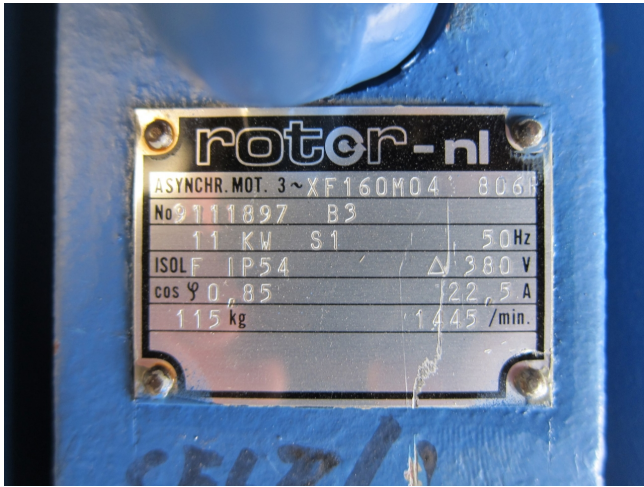
Why choose for HOSBV? We're not only the largest used refrigeration specialist in Europe, but also, we deliver all equipment including an extensive test, warranty and industrial cleaning.

\*Optional we can also perform a new paint job and arrange the logistics.









R404A/R507		Performance data												1.450 rpm	
Type	Cond. temp. °C	Cooling capacity Q <sub>0</sub> [W]				Power P [kW]									
		Evaporating temperature °C													
		10	5	0	-5	-10	-15	-20	-25	-30	-35	-40	-45		
FX2	30	Q 13423	11418	9621	8020	6606	5366	4290	3366	2584	1933	1402	979		
		P 2,21	2,19	2,13	2,05	1,94	1,80	1,65	1,48	1,31	1,12	0,94	0,75		
	40	Q 11561	9785	8201	6797	5562	4485	3555	2761	2092	1537	1085	724		
		P 2,65	2,56	2,44	2,30	2,13	1,95	1,76	1,55	1,34	1,12	0,91	0,70		
	50	Q 9652	8113	6749	5548	4500	3593	2816	2159	1609	1157	791			
		P 3,03	2,88	2,71	2,51	2,30	2,07	1,83	1,59	1,34	1,10	0,86			
FX3	30	Q 28402	24163	20377	17011	14041	11442	9187	7251	5608	4231	3096	2195		
		P 3,92	3,97	3,84	3,63	3,36	3,04	2,67	2,28	1,86	1,43	1,00	0,70		
	40	Q 24498	20763	17437	14495	11911	9657	7710	6042	4628	3442	2458	1650		
		P 4,97	4,89	4,66	4,41	4,11	3,77	3,40	3,01	2,61	2,21	1,83	1,46		
	50	Q 20584	17356	14408	11985	9791	7889	6254	4860	3680	2690	1862			
		P 5,90	5,62	5,28	4,89	4,47	4,02	3,56	3,08	2,61	2,15	1,72			
FX4	30	Q 53909	45836	38585	32117	26393	21373	17019	13292	10151	7559	5476	3862		
		P 8,34	8,30	8,09	7,73	7,25	6,68	6,04	5,36	4,66	3,96	3,29	2,69		
	40	Q 46772	39538	33069	27326	22270	17862	14063	10834	8135	5928	4173	2832		
		P 10,09	9,75	9,27	8,67	7,98	7,21	6,41	5,59	4,78	4,00	3,27	2,63		
	50	Q 39157	32814	27179	22214	17880	14137	10946	8268	6064	4295	2922			
		P 11,44	10,83	10,10	9,28	8,40	7,47	6,53	5,59	4,69	3,85	3,09			
FX5	30	Q 95654	81844	69253	57854	47620	39522	32533	26424	21768	17338	13105	9105		
		P 12,98	13,48	13,55	13,24	12,62	11,75	10,69	9,49	8,22	6,94	5,70	4,57		
	40	Q 80449	70784	59051	49154	40014	31925	24889	19967	15981	12405	8905	6278		
		P 16,87	16,64	16,05	15,16	14,03	12,72	11,28	9,79	8,29	6,85	5,53	4,29		
	50	Q 70427	59251	49183	40194	32258	25345	19428	14480	10472	7377	5168			
		P 20,21	19,31	18,12	16,70	15,11	13,41	11,67	9,93	8,26	6,73	5,38			
FX14/1166	30	Q 131605	112604	95281	79598	65518	53000	42008	32503	24447	17801	12527	8587		
		P 17,86	18,55	18,64	18,22	17,37	16,17	14,71	13,06	11,32	9,55	7,85	6,29		
	40	Q 114650	97388	81227	67628	55054	43966	34326	26096	19217	13711	9480	6506		
		P 23,21	22,89	22,08	20,86	19,30	17,49	15,52	13,47	11,41	9,43	7,61	6,04		
	50	Q 98896	81521	67668	55301	44382	34871	26730	19922	14408	10150	7110			
		P 27,80	26,56	24,92	22,97	20,79	18,45	16,05	13,66	11,37	9,25	7,40			
FX14/1366	30	Q 154448	132149	111819	93414	76889	62199	49299	38144	28690	20890	14701	10078		
		P 20,96	21,77	21,87	21,38	20,38	18,98	17,26	15,33	13,28	11,21	9,21	7,39		
	40	Q 134550	114291	95912	79366	64609	51597	40284	30625	22575	16091	11125	7635		